

**GROUPE  
AUSTONI**

[www.groupeaustoni.com](http://www.groupeaustoni.com)

**SNDPI**

[www.sndpi.com](http://www.sndpi.com)





Fraises et alésoirs en métal dur brasé





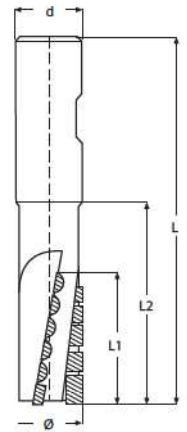
301



## FRAISES D'ÉBAUCHE QUEUE CYLINDRIQUE

Tige cylindrique Weldon DIN 1835

| Ø js16 | L   | L1 | L2 | d h6 | z | €      |
|--------|-----|----|----|------|---|--------|
| 20     | 116 | 45 | 60 | 25   | 3 | 129,00 |
| 25     | 121 | 50 | 65 | 25   | 4 | 149,30 |
| 32     | 135 | 60 | 75 | 32   | 4 | 189,80 |
| 40     | 155 | 80 | 95 | 32   | 4 | 235,50 |



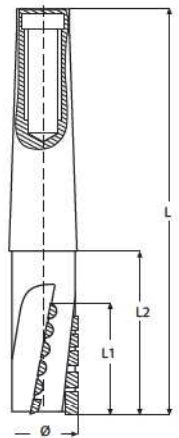
306



## FRAISES D'ÉBAUCHE QUEUE CONIQUE

Tige cône morse DIN 228 B

| Ø js16 | L   | L1 | L2  | CM | z | €      |
|--------|-----|----|-----|----|---|--------|
| 20     | 146 | 45 | 60  | 3  | 3 | 141,70 |
| 25     | 158 | 55 | 72  | 3  | 4 | 157,90 |
| 28     | 158 | 55 | 72  | 3  | 4 | 162,95 |
| 30     | 189 | 60 | 80  | 4  | 4 | 199,90 |
| 32     | 189 | 60 | 80  | 4  | 4 | 199,90 |
| 35     | 199 | 70 | 90  | 4  | 4 | 230,30 |
| 40     | 209 | 80 | 100 | 4  | 4 | 240,40 |



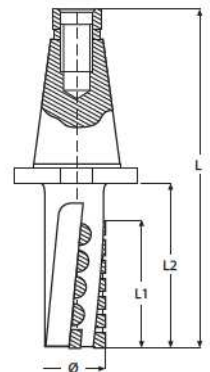
311/A



## FRAISES D'ÉBAUCHE CONE ISO DIN 2080

Tige ISO DIN 2080

| Ø js16 | L   | L1  | L2  | ISO | z | €      |
|--------|-----|-----|-----|-----|---|--------|
| 40     | 220 | 80  | 115 | 40  | 4 | 295,00 |
| 50     | 282 | 100 | 140 | 50  | 6 | 541,50 |
| 63     | 297 | 115 | 155 | 50  | 6 | 601,30 |



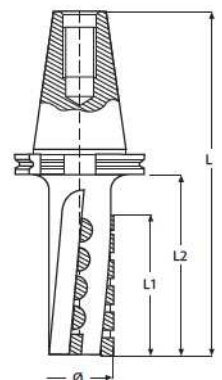
311/B



## FRAISES D'ÉBAUCHE CONE ISO DIN 69871

Tige ISO DIN 69871

| Ø js16 | L   | L1  | L2  | ISO | z | €      |
|--------|-----|-----|-----|-----|---|--------|
| 40     | 203 | 80  | 115 | 40  | 4 | 335,50 |
| 50     | 228 | 100 | 140 | 40  | 6 | 538,00 |
| 50     | 261 | 100 | 140 | 50  | 6 | 588,00 |
| 63     | 276 | 115 | 155 | 50  | 6 | 664,00 |

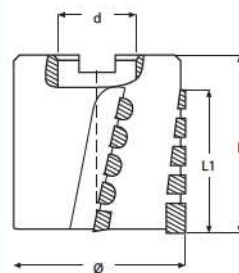


316

FRAISES D'ÉBAUCHE EN BOUT



| Ø js16 | L  | L1 | d h7 | z | €      |
|--------|----|----|------|---|--------|
| 50     | 50 | 40 | 22   | 6 | 193,50 |
| 63     | 60 | 50 | 27   | 6 | 237,80 |
| 80     | 65 | 60 | 32   | 8 | 316,00 |
| 100    | 70 | 60 | 40   | 8 | 373,50 |



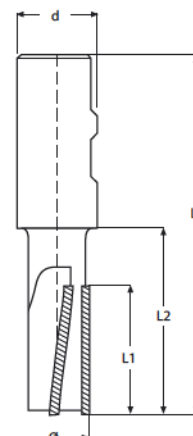
321

FRAISES HÉLICOIDALES QUEUE CYLINDRIQUE



Tige cylindrique Weldon DIN 1835

| Ø e8 | L   | L1 | L2 | d h6 | z | €      |
|------|-----|----|----|------|---|--------|
| 16   | 93  | 30 | 45 | 16   | 2 | 112,50 |
| 20   | 114 | 40 | 58 | 25   | 4 | 179,50 |
| 25   | 126 | 50 | 70 | 25   | 4 | 215,00 |
| 32   | 130 | 50 | 70 | 32   | 4 | 247,00 |
| 40   | 145 | 65 | 85 | 32   | 6 | 323,00 |



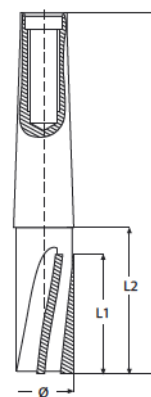
326

FRAISES HÉLICOIDALES QUEUE CONIQUE



Tige cône morse DIN 228 B

| Ø e8 | L   | L1 | L2 | CM | z | €      |
|------|-----|----|----|----|---|--------|
| 20   | 146 | 40 | 60 | 3  | 4 | 189,50 |
| 25   | 156 | 50 | 70 | 3  | 4 | 227,50 |
| 32   | 179 | 50 | 70 | 4  | 4 | 259,50 |
| 40   | 197 | 65 | 88 | 4  | 6 | 341,50 |



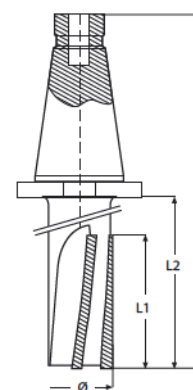
331/A

FRAISES HÉLICOIDALES CONE ISO DIN 2080



Tige ISO DIN 2080

| Ø e8 | L   | L1  | L2  | ISO | z | €      |
|------|-----|-----|-----|-----|---|--------|
| 40   | 200 | 65  | 95  | 40  | 6 | 411,50 |
| 50   | 257 | 80  | 115 | 50  | 6 | 645,00 |
| 63   | 282 | 100 | 140 | 50  | 6 | 733,50 |

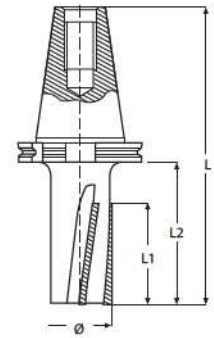


### 331/B



#### FRAISES HELICOIDALES CONE ISO DIN 69871

| Tige ISO DIN 69871 |     |     |     |     |   |        | SERIE LONGUE |     |     |     |     |   |
|--------------------|-----|-----|-----|-----|---|--------|--------------|-----|-----|-----|-----|---|
| Ø e8               | L   | L1  | L2  | ISO | z | €      | Ø e8         | L   | L1  | L2  | ISO | z |
| 40                 | 183 | 65  | 95  | 40  | 6 | 474,50 | 50           | 306 | 150 | 185 | 50  | 6 |
| 50                 | 203 | 80  | 115 | 40  | 6 | 569,00 | 50           | 356 | 200 | 235 | 50  | 6 |
| 50                 | 236 | 80  | 115 | 50  | 6 | 695,50 | 63           | 311 | 150 | 190 | 50  | 6 |
| 63                 | 261 | 100 | 140 | 50  | 6 | 797,00 | 63           | 361 | 200 | 240 | 50  | 6 |

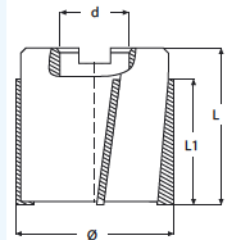


### 336



#### FRAISES HELICOIDALES EN BOUT

| Ø e8 | L  | L1 | d h7 | z | €      |
|------|----|----|------|---|--------|
| 50   | 50 | 40 | 22   | 6 | 247,00 |
| 63   | 60 | 50 | 27   | 6 | 307,50 |
| 80   | 65 | 50 | 32   | 8 | 455,50 |

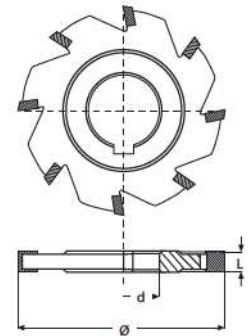


### 341

#### FRAISES 3 TAILLES DOUBLE HELICES ALTERNEES



| Ø js16 | L  | d h7 | z  | €      | Ø j16 | L  | d h7 | z  | €      |
|--------|----|------|----|--------|-------|----|------|----|--------|
| 63     | 6  | 22   | 8  | 112,50 | 125   | 8  | 32   | 12 | 205,55 |
| 63     | 8  | 22   | 8  | 118,70 | 125   | 10 | 32   | 12 | 216,90 |
| 63     | 10 | 22   | 8  | 122,90 | 125   | 12 | 32   | 12 | 226,20 |
| 80     | 6  | 22   | 8  | 124,00 | 125   | 14 | 32   | 12 | 232,40 |
| 80     | 8  | 22   | 8  | 129,00 | 125   | 16 | 32   | 12 | 237,50 |
| 80     | 10 | 22   | 8  | 134,25 | 160   | 10 | 40   | 16 | 246,80 |
| 80     | 12 | 22   | 8  | 145,00 | 160   | 12 | 40   | 16 | 316,50 |
| 100    | 6  | 27   | 10 | 152,30 | 160   | 14 | 40   | 16 | 326,90 |
| 100    | 8  | 27   | 10 | 159,00 | 160   | 16 | 40   | 16 | 338,30 |
| 100    | 10 | 27   | 10 | 166,80 | 200   | 12 | 40   | 20 | 480,30 |
| 100    | 12 | 27   | 10 | 175,60 | 200   | 14 | 40   | 20 | 506,00 |
| 100    | 14 | 27   | 10 | 183,30 | 200   | 16 | 40   | 20 | 531,95 |
| 100    | 16 | 27   | 10 | 191,00 | 200   | 18 | 40   | 20 | 557,50 |
| 125    | 6  | 32   | 12 | 196,20 | 200   | 20 | 40   | 20 | 581,00 |

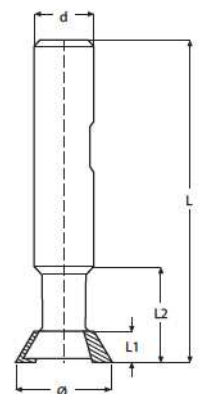


### 346



#### FRAISES CONIQUES 2 TAILLES 60° QUEUE CYLINDRIQUE

| Tige cylindrique Weldon DIN 1835 - angle 50°-55° sur demande |    |    |    |      |   |        |
|--|----|----|----|------|---|--------|
| Ø  | L  | L1 | L2 | d h6 | z | €      |
| 20   | 66 | 7  | 21 | 12   | 6 | 103,40 |
| 25   | 73 | 8  | 25 | 16   | 6 | 115,50 |
| 32   | 78 | 10 | 30 | 16   | 6 | 131,80 |
| 40   | 85 | 12 | 35 | 20   | 6 | 170,50 |





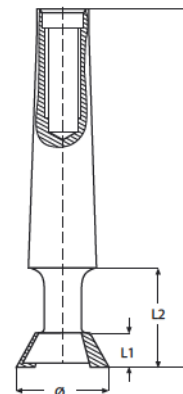
351



FRAISES CONIQUES 2 TAILLES 60° QUEUE CONIQUE

Tige cône morse DIN 2288 - Angle 50°-55° sur demande

| Ø  | L   | L1 | L2 | CM | z | €      |
|----|-----|----|----|----|---|--------|
| 25 | 96  | 9  | 27 | 2  | 6 | 129,50 |
| 32 | 99  | 12 | 30 | 2  | 6 | 139,20 |
| 40 | 101 | 14 | 32 | 2  | 6 | 177,25 |
| 50 | 124 | 16 | 38 | 3  | 6 | 213,00 |



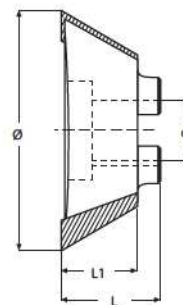
356



FRAISES CONIQUES 2 TAILLES 60° EN BOUT

Angle 50°-55° sur demande

| Ø   | L  | L1 | d h7 | z  | €      |
|-----|----|----|------|----|--------|
| 63  | 26 | 20 | 16   | 8  | 184,60 |
| 80  | 32 | 25 | 22   | 8  | 224,40 |
| 100 | 40 | 32 | 27   | 10 | 298,25 |
| 125 | 45 | 35 | 32   | 12 | 405,00 |



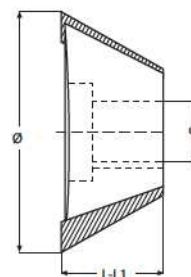
356/L



FRAISES CONIQUES 2 TAILLES 60° EN BOUT SÉRIE LONGUE

Angle 50°-55° sur demande

| Ø   | L-L1 | d h7 | z  | €      |
|-----|------|------|----|--------|
| 63  | 26   | 16   | 8  | 204,50 |
| 80  | 32   | 22   | 8  | 249,95 |
| 100 | 40   | 27   | 10 | 329,50 |
| 125 | 50   | 32   | 12 | 453,30 |



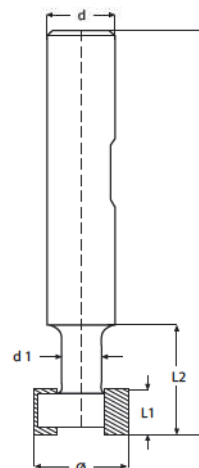
361



FRAISES POUR RAINURES A "T" ALTERNÈES QUEUE CYLINDRIQUE

Tige cylindrique Weldon DIN 1835

| Ø h11 | L  | L1 k11 | L2 | d h6 | d 1  | z | €      |
|-------|----|--------|----|------|------|---|--------|
| 12,5  | 55 | 6      | 15 | 10   | 5,5  | 6 | 75,50  |
| 16    | 60 | 8      | 20 | 10   | 7    | 6 | 81,25  |
| 19    | 69 | 9      | 24 | 12   | 8,5  | 6 | 89,75  |
| 22    | 71 | 10     | 26 | 16   | 10,5 | 6 | 98,25  |
| 25    | 78 | 11     | 30 | 16   | 12   | 6 | 106,80 |
| 28    | 80 | 12     | 32 | 16   | 13   | 6 | 115,30 |



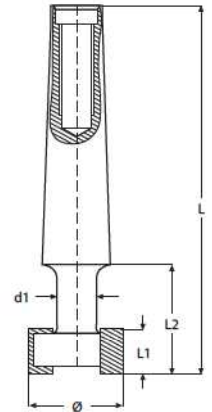
366



FRAISES POUR RAINURES A "T" ALTERNÉE QUEUE CONIQUE

Tige cône morse DIN 228 B

| Ø h11 | L   | L1 k11 | L2 | d 1  | CM | z | €      |
|-------|-----|--------|----|------|----|---|--------|
| 19    | 93  | 9      | 24 | 8,5  | 2  | 6 | 96,60  |
| 22    | 95  | 10     | 26 | 10,5 | 2  | 6 | 103,95 |
| 25    | 99  | 11     | 30 | 12   | 2  | 6 | 113,60 |
| 28    | 101 | 12     | 32 | 13   | 2  | 6 | 122,10 |
| 32    | 108 | 14     | 39 | 15   | 2  | 8 | 139,15 |
| 36    | 130 | 16     | 44 | 17   | 3  | 8 | 153,40 |
| 40    | 136 | 18     | 50 | 19   | 3  | 8 | 169,25 |
| 45    | 140 | 20     | 54 | 21   | 3  | 8 | 196,65 |
| 50    | 146 | 22     | 60 | 23   | 3  | 8 | 241,40 |



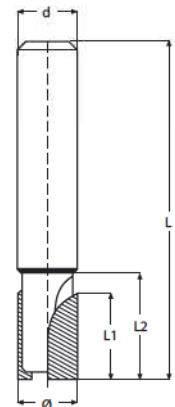
371

FRAISES À 2 DENTS QUEUE CYLINDRIQUE COUPE AU CENTRE POUR RAINURES



| Ø e8 | L   | L1 | L2 | d h6 | €     |
|------|-----|----|----|------|-------|
| 6    | 54  | 12 | 16 | 6    | 29,95 |
| 8    | 54  | 12 | 16 | 8    | 29,95 |
| 10   | 60  | 12 | 19 | 10   | 31,50 |
| 11   | 70  | 16 | 25 | 12   | 32,00 |
| 12   | 70  | 16 | 25 | 12   | 34,00 |
| 13   | 70  | 19 | 25 | 12   | 38,70 |
| 14   | 70  | 19 | 25 | 12   | 38,70 |
| 15   | 75  | 19 | 25 | 16   | 41,30 |
| 16   | 80  | 22 | 32 | 16   | 43,90 |
| 18   | 80  | 22 | 32 | 16   | 46,50 |
| 20   | 85  | 22 | 34 | 20   | 51,65 |
| *22  | 100 | 25 | 43 | 25   | 67,15 |
| *24  | 100 | 25 | 43 | 25   | 69,70 |
| *25  | 100 | 25 | 43 | 25   | 73,35 |
| *28  | 100 | 25 | 43 | 25   | 84,70 |
| *30  | 100 | 25 | 43 | 25   | 90,90 |

\*Tige Weldon



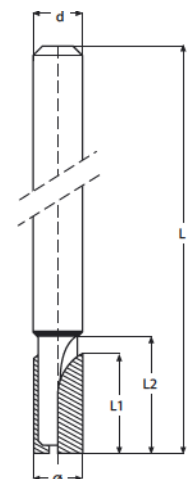
371/L

SERIE LONGUE



FRAISES À 2 DENTS QUEUE CYLINDRIQUE, SÉRIE LONGUE COUPE AU CENTRE POUR RAINURES

| Ø e8 | L   | L1 | L2 | d h8 | €     |
|------|-----|----|----|------|-------|
| 6    | 100 | 12 | 16 | 6    | 33,60 |
| 8    | 100 | 12 | 16 | 8    | 35,00 |
| 10   | 100 | 12 | 19 | 10   | 37,70 |
| 12   | 150 | 16 | 25 | 12   | 41,80 |
| 14   | 150 | 19 | 25 | 12   | 45,45 |
| 16   | 150 | 22 | 32 | 16   | 50,60 |
| 18   | 150 | 22 | 32 | 16   | 55,80 |
| 20   | 150 | 22 | 34 | 20   | 61,95 |



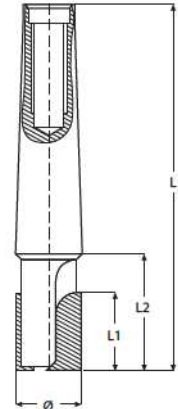
376

FRAISES À 2 DENTS QUEUE CONIQUE COUPE AU CENTRE  
POUR RAINURES



Tige cône morse DIN 228 B

| Ø e8 | L   | L1 | L2 | CM | €      |
|------|-----|----|----|----|--------|
| 12   | 95  | 16 | 26 | 2  | 58,35  |
| 14   | 95  | 19 | 26 | 2  | 61,95  |
| 15   | 95  | 19 | 26 | 2  | 61,95  |
| 16   | 102 | 22 | 33 | 2  | 64,50  |
| 18   | 102 | 22 | 33 | 2  | 67,00  |
| 20   | 123 | 22 | 37 | 3  | 72,00  |
| 22   | 129 | 25 | 43 | 3  | 77,45  |
| 24   | 131 | 25 | 45 | 3  | 81,60  |
| 25   | 131 | 25 | 45 | 3  | 85,00  |
| 26   | 131 | 25 | 45 | 3  | 90,35  |
| 28   | 131 | 25 | 45 | 3  | 97,00  |
| 30   | 131 | 25 | 45 | 3  | 104,80 |
| 32   | 131 | 25 | 45 | 3  | 113,60 |



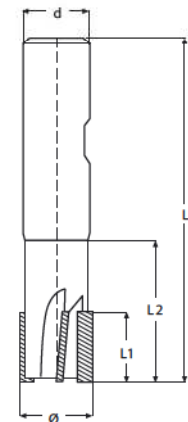
381

FRAISES À PLUSIEUR COUPES QUEUE CYLINDRIQUE



\*Tige Weldon

| Ø Js16 | L  | L1 | L2 | d h6 | z | €     |
|--------|----|----|----|------|---|-------|
| 10     | 60 | 12 | 20 | 10   | 3 | 41,50 |
| 12     | 70 | 16 | 25 | 12   | 3 | 42,55 |
| 14     | 70 | 16 | 25 | 12   | 4 | 50,50 |
| 15     | 78 | 16 | 30 | 16   | 4 | 53,20 |
| 16     | 78 | 16 | 30 | 16   | 4 | 53,20 |
| 18     | 83 | 19 | 35 | 16   | 4 | 60,00 |
| 20     | 85 | 19 | 35 | 20   | 4 | 63,80 |
| *22    | 96 | 22 | 40 | 25   | 4 | 73,40 |
| *25    | 96 | 22 | 40 | 25   | 6 | 82,45 |
| *28    | 96 | 22 | 40 | 25   | 6 | 90,40 |
| *30    | 96 | 22 | 40 | 25   | 6 | 97,30 |



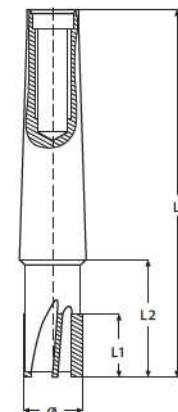
386

FRAISES A PLUSIEURS COUPES QUEUE CONIQUE



Tige cône morse DIN 228 B

| ØJs16 | L   | L1 | L2 | CM | z | €      |
|-------|-----|----|----|----|---|--------|
| 12    | 99  | 16 | 30 | 2  | 4 | 63,80  |
| 14    | 99  | 16 | 30 | 2  | 4 | 66,50  |
| 15    | 101 | 16 | 32 | 2  | 4 | 70,75  |
| 16    | 101 | 16 | 32 | 2  | 4 | 74,45  |
| 18    | 106 | 19 | 37 | 2  | 4 | 78,70  |
| 20    | 126 | 19 | 40 | 3  | 4 | 84,00  |
| 22    | 128 | 22 | 42 | 3  | 4 | 86,70  |
| 25    | 128 | 22 | 42 | 3  | 6 | 97,90  |
| 28    | 131 | 22 | 45 | 3  | 6 | 102,65 |
| 30    | 131 | 22 | 45 | 3  | 6 | 105,50 |
| 32    | 159 | 22 | 50 | 4  | 6 | 115,95 |
| 35    | 164 | 25 | 55 | 4  | 6 | 129,80 |
| 40    | 164 | 25 | 55 | 4  | 6 | 150,50 |





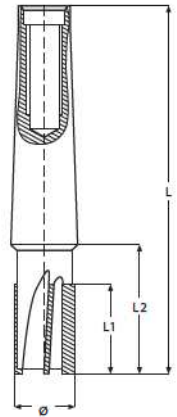
## 386/L



### FRAISES A PLUSIEURS COUPES SERIES LONGUE QUEUE CONIQUE

Tige cône morse DIN 228 B

| ØJs16 | L   | L1 | L2 | CM | z | €      |
|-------|-----|----|----|----|---|--------|
| 20    | 131 | 30 | 45 | 3  | 4 | 108,40 |
| 25    | 136 | 35 | 50 | 3  | 6 | 134,20 |
| 30    | 146 | 40 | 60 | 3  | 6 | 149,70 |
| 35    | 169 | 40 | 60 | 4  | 6 | 170,40 |
| 40    | 179 | 50 | 70 | 4  | 6 | 219,45 |

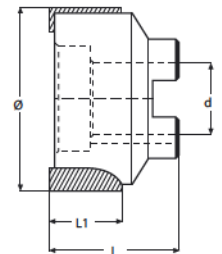


## 391

### FRAISES 2 TAILLES EN BOUT



| ØJs16 | L  | L1 | d h7 | z  | €      |
|-------|----|----|------|----|--------|
| 40    | 28 | 16 | 16   | 6  | 95,50  |
| 50    | 32 | 16 | 22   | 6  | 106,35 |
| 63    | 40 | 20 | 27   | 8  | 126,50 |
| 80    | 45 | 22 | 32   | 8  | 162,60 |
| 100   | 50 | 22 | 40   | 10 | 200,30 |
| 125   | 60 | 25 | 40   | 12 | 283,00 |

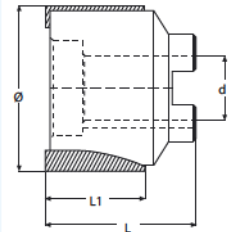


## 391/L

### FRAISES 2 TAILLES EN BOUT SERIE LONGUE



| ØJs16 | L  | L1 | d h7 | z | €      |
|-------|----|----|------|---|--------|
| 40    | 50 | 40 | 16   | 6 | 130,60 |
| 50    | 60 | 50 | 22   | 6 | 151,30 |
| 63    | 72 | 60 | 27   | 8 | 216,90 |

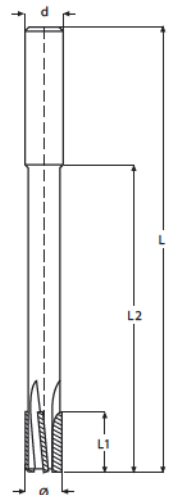


## 401

### ALÉSOIRS POUR MACHINES QUEUE CYLINDRIQUE



| Ø H7 | L   | L1 | L2  | d h8 | z | €     |
|------|-----|----|-----|------|---|-------|
| 8    | 121 | 16 | 85  | 8    | 4 | 63,30 |
| 9    | 125 | 16 | 85  | 10   | 4 | 66,50 |
| 10   | 130 | 19 | 90  | 10   | 4 | 69,15 |
| 11   | 135 | 19 | 90  | 12   | 4 | 71,80 |
| 12   | 145 | 19 | 100 | 12   | 6 | 76,00 |
| 13   | 155 | 19 | 110 | 12   | 6 | 76,00 |
| 14   | 163 | 19 | 115 | 16   | 6 | 77,65 |
| 15   | 163 | 19 | 115 | 16   | 6 | 79,25 |
| 16   | 168 | 22 | 120 | 16   | 6 | 84,60 |
| 17   | 178 | 22 | 130 | 16   | 6 | 86,20 |
| 18   | 178 | 22 | 130 | 16   | 6 | 89,90 |
| 19   | 180 | 25 | 130 | 20   | 6 | 93,60 |
| 20   | 180 | 25 | 130 | 20   | 6 | 97,35 |

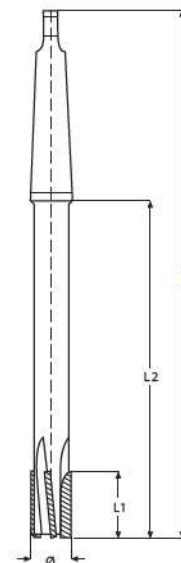


ALÉSOIRS POUR MACHINES QUEUE CONIQUE



| Ø H7 | L   | L1 | L2  | CM | z | €      |
|------|-----|----|-----|----|---|--------|
| 8    | 170 | 16 | 105 | 1  | 4 | 69,10  |
| 9    | 170 | 16 | 105 | 1  | 4 | 70,70  |
| 10   | 170 | 19 | 105 | 1  | 4 | 73,40  |
| 11   | 170 | 19 | 105 | 1  | 4 | 76,00  |
| 12   | 180 | 19 | 115 | 1  | 6 | 80,30  |
| 13   | 180 | 19 | 115 | 1  | 6 | 80,30  |
| 14   | 195 | 19 | 115 | 2  | 6 | 81,90  |
| 15   | 210 | 19 | 130 | 2  | 6 | 84,60  |
| 16   | 210 | 22 | 130 | 2  | 6 | 88,30  |
| 17   | 220 | 22 | 140 | 2  | 6 | 89,90  |
| 18   | 220 | 22 | 140 | 2  | 6 | 94,70  |
| 19   | 225 | 25 | 145 | 2  | 6 | 98,40  |
| 20   | 225 | 25 | 145 | 2  | 6 | 103,20 |
| 21   | 225 | 25 | 145 | 2  | 6 | 103,20 |
| 22   | 235 | 25 | 155 | 2  | 6 | 106,40 |
| 23   | 235 | 25 | 155 | 2  | 6 | 109,60 |

| Ø H7 | L   | L1 | L2  | CM | z | €      |
|------|-----|----|-----|----|---|--------|
| 24   | 269 | 25 | 170 | 3  | 6 | 113,85 |
| 25   | 269 | 25 | 170 | 3  | 6 | 113,85 |
| 26   | 269 | 25 | 170 | 3  | 6 | 113,85 |
| 27   | 274 | 25 | 175 | 3  | 8 | 116,50 |
| 28   | 274 | 25 | 175 | 3  | 8 | 116,50 |
| 29   | 279 | 30 | 180 | 3  | 8 | 124,45 |
| 30   | 279 | 30 | 180 | 3  | 8 | 124,45 |
| 31   | 279 | 30 | 180 | 3  | 8 | 126,60 |
| 32   | 279 | 30 | 180 | 3  | 8 | 128,20 |
| 34   | 310 | 30 | 186 | 4  | 8 | 170,75 |
| 35   | 310 | 30 | 186 | 4  | 8 | 170,75 |
| 36   | 310 | 30 | 186 | 4  | 8 | 176,00 |
| 37   | 310 | 30 | 186 | 4  | 8 | 176,00 |
| 38   | 310 | 30 | 186 | 4  | 8 | 184,00 |
| 39   | 310 | 30 | 186 | 4  | 8 | 184,00 |
| 40   | 310 | 30 | 186 | 4  | 8 | 186,20 |

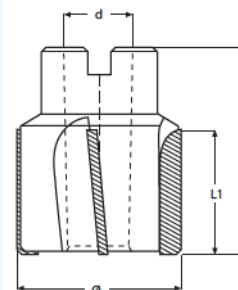


ALÉSOIRS POUR MACHINES EN BOUT ALESAGE CONIQUE 1:30



| Ø H7 | L  | L1 | d  | z | €      |
|------|----|----|----|---|--------|
| 30   | 45 | 30 | 16 | 6 | 114,35 |
| 32   | 45 | 30 | 16 | 6 | 114,35 |
| 33   | 45 | 30 | 16 | 6 | 114,35 |
| 34   | 45 | 30 | 16 | 6 | 117,00 |
| 35   | 45 | 30 | 16 | 6 | 117,00 |
| 36   | 50 | 30 | 16 | 6 | 119,15 |
| 38   | 50 | 30 | 16 | 6 | 119,15 |
| 40   | 50 | 30 | 16 | 6 | 121,80 |
| 42   | 50 | 30 | 19 | 8 | 141,50 |
| 44   | 50 | 30 | 19 | 8 | 141,50 |
| 45   | 50 | 30 | 19 | 8 | 143,00 |
| 46   | 56 | 30 | 19 | 8 | 143,00 |
| 47   | 56 | 30 | 19 | 8 | 143,00 |
| 48   | 56 | 30 | 19 | 8 | 146,30 |

| Ø h7 | L  | L1 | d  | z  | €      |
|------|----|----|----|----|--------|
| 50   | 56 | 30 | 19 | 8  | 146,30 |
| 52   | 63 | 30 | 22 | 10 | 156,40 |
| 54   | 63 | 30 | 22 | 10 | 156,40 |
| 55   | 63 | 30 | 22 | 10 | 156,40 |
| 58   | 63 | 30 | 22 | 10 | 161,70 |
| 60   | 63 | 30 | 22 | 10 | 161,70 |
| 62   | 63 | 30 | 27 | 10 | 188,85 |
| 65   | 71 | 30 | 27 | 10 | 193,05 |
| 68   | 71 | 30 | 27 | 10 | 198,40 |
| 70   | 71 | 30 | 27 | 10 | 198,40 |
| 72   | 71 | 30 | 32 | 12 | 219,70 |
| 75   | 71 | 30 | 32 | 12 | 225,55 |
| 80   | 71 | 30 | 32 | 12 | 233,00 |



Alésage conique 1:30

TYPES DE REVÊTEMENTS DISPONIBLES

**ETAÏN** Revêtement idéal pour l'usinage des aciers en général et pour le récupérer avec une dureté inférieure à 45 HRC.

**ALTIN** Revêtement idéal pour l'usinage des aciers en général et pour le récupérer avec une dureté inférieure à 45 HRC dans des conditions de mauvaises lubrifications.

**SS38-L** Revêtement idéal pour l'usinage des aciers inoxydables (même dans des conditions de mauvaise lubrification), le cuivre, le cuivre électrolytique, le bronze, céramique métal (pas d'abréviation physico-chimique).

**K772** Revêtement idéal pour l'usinage des aciers trempés et revenus jusqu'à 52 HRC (avec lubrification), fontes en général, AVP, AVZ, métal céramique (pas d'abréviation physico-chimique)

**SS39-L** Revêtement idéal pour l'aluminium d'usinage, des matières plastiques et résines, du nylon, des matières abrasives, métal céramique (pas d'abréviation physico-chimique)

**BLEU** Revêtement idéal pour l'usinage de la tige 52 HRC durci, l'aluminium, le graphite, la céramique pure (nanotechnologie).





CERTAINS OUTILS SPECIAUX  
DE NOTRE PRODUCTION

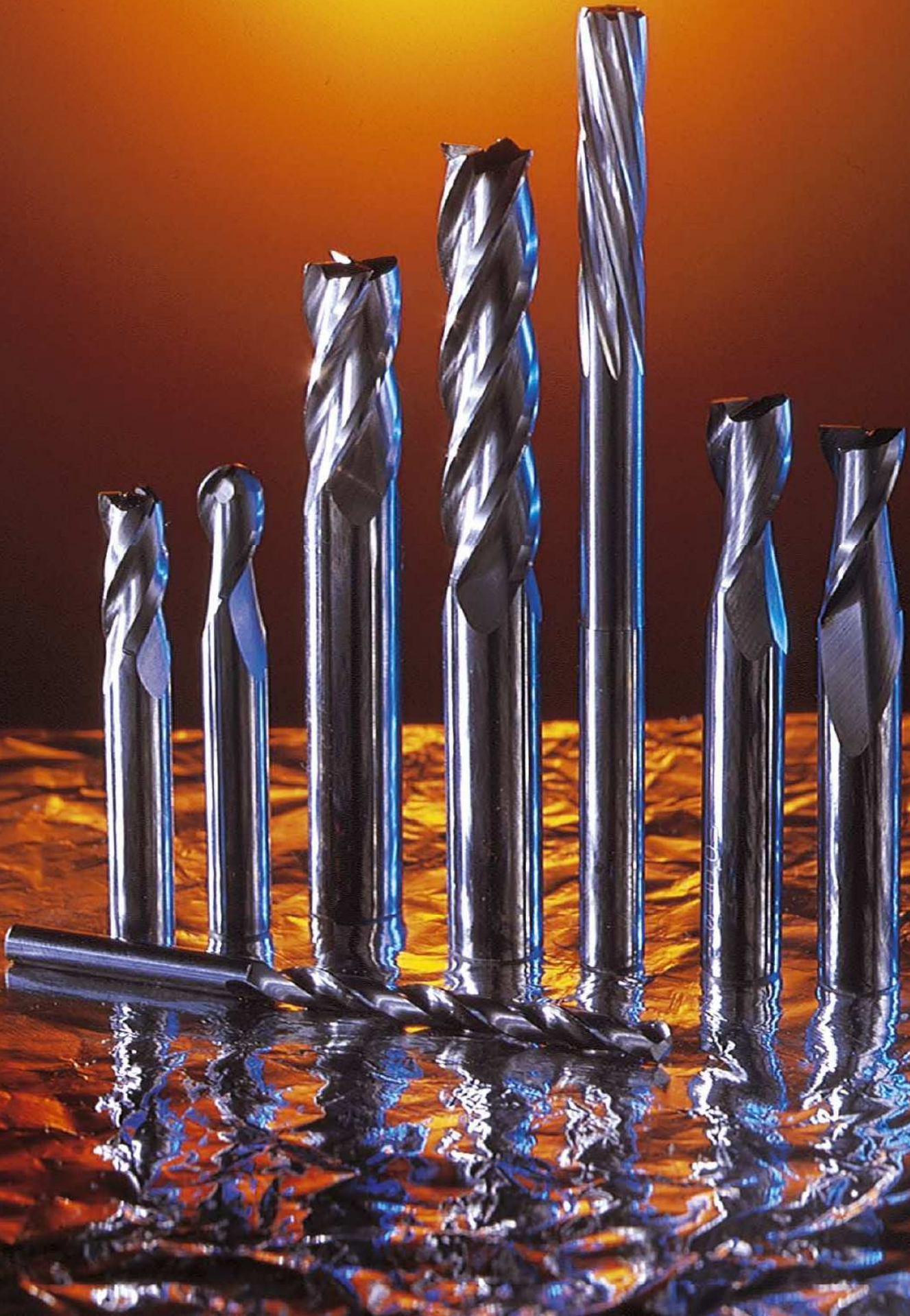




**GROUPE  
AUSTONI**

**SNDPI**

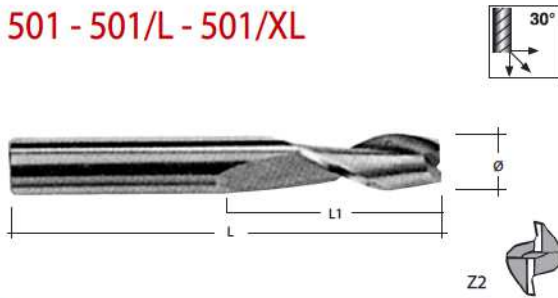
Fraises, forets et alésoirs entièrement en métal dur



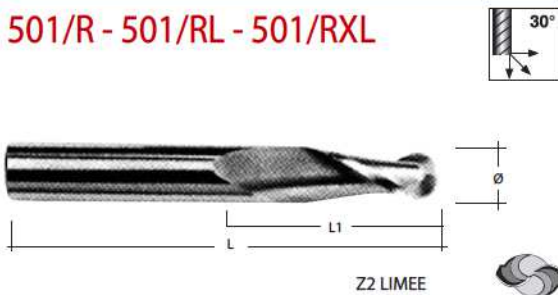


## FRAISES À QUEUE EN CARBURE MONOBLOC

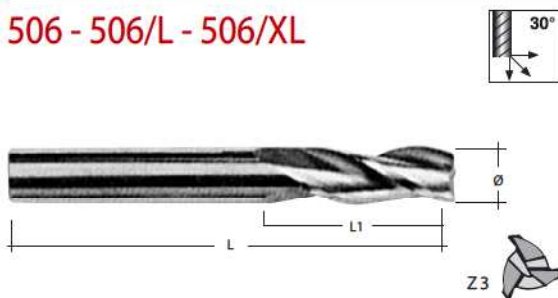
## 501 - 501/L - 501/XL



## 501/R - 501/RL - 501/RXL



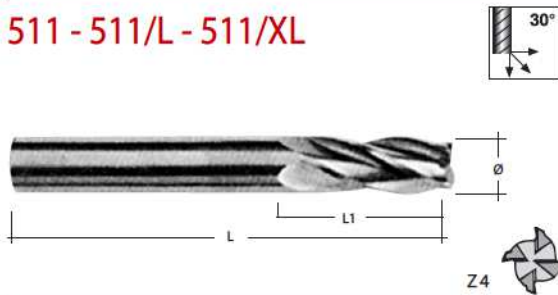
## 506 - 506/L - 506/XL



## 506/R - 506/RL - 506/RXL



## 511 - 511/L - 511/XL



## 511/R - 511/RL - 511/RXL



SERIE COURTE

SERIE LONGUE

EXTRA-LONGUE

| Ø    | SERIE COURTE |     | SERIE LONGUE |     | EXTRA-LONGUE |     |
|------|--------------|-----|--------------|-----|--------------|-----|
|      | L1           | L   | L1           | L   | L1           | L   |
| 2    | 7            | 40  | -            | -   | -            | -   |
| 2,5  | 8            | 40  | -            | -   | -            | -   |
| 3    | 10           | 40  | 18           | 60  | 25           | 75  |
| 3,5  | 10           | 40  | 18           | 60  | 25           | 75  |
| 4    | 12           | 40  | 20           | 60  | 32           | 75  |
| 4,5  | 12           | 50  | 20           | 60  | 32           | 75  |
| 5    | 14           | 50  | 25           | 60  | 38           | 100 |
| 5,5  | 14           | 50  | 25           | 60  | 38           | 100 |
| 6    | 16           | 50  | 30           | 70  | 40           | 100 |
| 6,5  | 16           | 50  | 30           | 70  | 40           | 100 |
| 7    | 18           | 60  | 30           | 70  | 40           | 100 |
| 7,5  | 18           | 60  | 35           | 80  | 45           | 100 |
| 8    | 19           | 60  | 35           | 80  | 45           | 100 |
| 8,5  | 19           | 60  | 35           | 80  | 45           | 100 |
| 9    | 20           | 60  | 35           | 80  | 45           | 100 |
| 9,5  | 22           | 70  | 40           | 90  | 50           | 120 |
| 10   | 22           | 70  | 40           | 90  | 50           | 120 |
| 10,5 | 22           | 70  | 40           | 90  | 50           | 120 |
| 11   | 22           | 70  | 40           | 90  | 50           | 120 |
| 11,5 | 24           | 70  | 50           | 100 | 60           | 150 |
| 12   | 26           | 75  | 50           | 100 | 60           | 150 |
| 13   | 26           | 75  | 50           | 100 | 60           | 150 |
| 14   | 28           | 75  | 58           | 125 | 75           | 150 |
| 15   | 28           | 75  | 58           | 125 | 75           | 150 |
| 16   | 32           | 90  | 58           | 125 | 75           | 150 |
| 18   | 32           | 90  | 58           | 125 | 75           | 150 |
| 20   | 34           | 100 | 60           | 125 | 75           | 150 |

SERIE COURTE

SERIE LONGUE

EXTRA-LONGUE

| Ø    | 501    | 501/R  | 506    | 506/R  | 511    | 511/R  | 501/L  | 501/RL | 506/L  | 506/RL | 511/L  | 511/RL | 501/XL | 501/RXL | 506/XL | 506/RXL | 511/XL | 511/RXL |
|------|--------|--------|--------|--------|--------|--------|--------|--------|--------|--------|--------|--------|--------|---------|--------|---------|--------|---------|
| 2    | 9,10   | 13,60  | 10,75  | 15,25  | 10,75  | 15,20  | -      | -      | -      | -      | -      | -      | -      | -       | -      | -       | -      | -       |
| 2,5  | 9,10   | 13,60  | 10,75  | 15,25  | 10,75  | 15,20  | -      | -      | -      | -      | -      | -      | -      | -       | -      | -       | -      | -       |
| 3    | 9,10   | 13,60  | 10,75  | 15,25  | 10,75  | 15,20  | 15,70  | 22,70  | 16,50  | 24,05  | 16,50  | 24,00  | 19,30  | 25,25   | 20,20  | 26,55   | 20,30  | 26,55   |
| 3,5  | 9,10   | 13,60  | 10,75  | 15,25  | 10,75  | 15,20  | 16,85  | 24,05  | 17,65  | 25,15  | 17,65  | 25,15  | 19,80  | 26,10   | 21,00  | 27,30   | 20,90  | 27,30   |
| 4    | 9,85   | 14,05  | 11,20  | 15,70  | 11,20  | 15,70  | 17,85  | 25,10  | 18,70  | 26,40  | 18,70  | 26,40  | 20,50  | 26,70   | 21,50  | 28,15   | 21,50  | 28,05   |
| 4,5  | 10,90  | 14,50  | 12,70  | 16,65  | 12,70  | 16,65  | 19,50  | 26,75  | 20,50  | 28,20  | 20,50  | 28,20  | 23,05  | 29,85   | 24,05  | 31,50   | 24,20  | 31,20   |
| 5    | 11,35  | 15,20  | 13,30  | 17,30  | 13,30  | 17,30  | 21,15  | 28,55  | 22,25  | 30,05  | 22,20  | 30,05  | 25,75  | 33,20   | 26,80  | 34,80   | 26,85  | 34,80   |
| 5,5  | 13,70  | 18,65  | 15,05  | 19,35  | 15,00  | 19,30  | 23,25  | 30,80  | 24,25  | 32,50  | 24,50  | 32,40  | 28,40  | 36,80   | 29,70  | 38,85   | 29,80  | 38,70   |
| 6    | 15,15  | 19,65  | 15,45  | 20,30  | 15,50  | 20,20  | 25,50  | 33,25  | 26,65  | 34,80  | 26,60  | 34,80  | 31,20  | 40,35   | 32,80  | 42,65   | 32,85  | 42,30   |
| 6,5  | 18,80  | 24,30  | 19,30  | 24,55  | 19,10  | 24,40  | 27,75  | 36,20  | 29,15  | 37,90  | 29,35  | 37,90  | 34,15  | 43,70   | 35,85  | 46,15   | 36,00  | 46,00   |
| 7    | 20,00  | 25,75  | 20,60  | 26,70  | 20,55  | 26,80  | 29,95  | 39,25  | 31,70  | 41,00  | 31,80  | 40,75  | 37,10  | 47,10   | 38,90  | 49,50   | 39,10  | 49,20   |
| 7,5  | 21,20  | 27,45  | 22,00  | 28,30  | 21,75  | 28,05  | 32,30  | 42,15  | 33,75  | 44,10  | 33,90  | 43,90  | 39,80  | 50,20   | 41,80  | 52,80   | 42,15  | 52,75   |
| 8    | 22,60  | 29,00  | 23,20  | 30,00  | 23,10  | 29,70  | 34,25  | 45,00  | 36,05  | 47,15  | 36,05  | 46,75  | 42,30  | 53,30   | 44,20  | 56,05   | 44,90  | 55,60   |
| 8,5  | 23,05  | 30,75  | 24,45  | 31,70  | 24,35  | 31,65  | 37,80  | 49,30  | 39,80  | 51,70  | 39,75  | 51,80  | 47,60  | 59,15   | 50,00  | 62,70   | 50,50  | 62,50   |
| 9    | 23,50  | 32,80  | 26,20  | 33,55  | 25,80  | 33,45  | 41,15  | 53,70  | 43,15  | 56,25  | 43,25  | 55,95  | 52,20  | 65,70   | 55,10  | 68,90   | 55,50  | 68,70   |
| 9,5  | 27,75  | 37,00  | 29,30  | 38,05  | 29,15  | 38,05  | 44,70  | 58,10  | 46,70  | 61,10  | 46,85  | 60,80  | 52,25  | 71,80   | 60,20  | 75,50   | 60,60  | 75,30   |
| 10   | 31,85  | 41,05  | 32,85  | 42,40  | 32,70  | 42,20  | 47,90  | 62,20  | 50,05  | 65,80  | 50,25  | 65,50  | 62,15  | 77,80   | 65,15  | 81,70   | 65,25  | 81,55   |
| 10,5 | 34,30  | 44,10  | 36,35  | 46,95  | 36,15  | 46,90  | 53,10  | 68,35  | 55,85  | 71,70  | 55,75  | 71,55  | 69,70  | 87,50   | 73,40  | 91,80   | 73,70  | 91,80   |
| 11   | 36,60  | 47,30  | 39,70  | 51,20  | 39,60  | 51,15  | 58,05  | 74,10  | 60,90  | 77,65  | 61,25  | 77,80  | 77,60  | 96,95   | 81,25  | 101,70  | 81,30  | 101,55  |
| 11,5 | 40,25  | 52,05  | 43,15  | 56,05  | 43,15  | 56,05  | 63,10  | 79,85  | 66,80  | 83,85  | 66,70  | 83,70  | 84,90  | 106,50  | 89,60  | 111,75  | 89,50  | 111,70  |
| 12   | 43,70  | 56,20  | 47,05  | 60,10  | 46,80  | 60,30  | 67,70  | 85,05  | 72,00  | 90,05  | 72,10  | 89,80  | 92,05  | 115,80  | 97,05  | 121,60  | 97,35  | 121,40  |
| 13   | 55,30  | 70,70  | 59,50  | 88,75  | 59,10  | 89,15  | 90,75  | 110,70 | 95,40  | 116,70 | 95,60  | 116,50 | 112,60 | 140,70  | 117,90 | 147,80  | 117,90 | 147,80  |
| 14   | 65,50  | 84,40  | 71,70  | 91,70  | 71,60  | 92,10  | 112,80 | 135,75 | 117,90 | 141,90 | 117,90 | 141,90 | 131,70 | 165,00  | 138,60 | 172,50  | 138,70 | 172,70  |
| 15   | 86,15  | 110,50 | 88,75  | 111,95 | 88,50  | 112,00 | 131,75 | 155,40 | 137,70 | 162,80 | 137,85 | 162,85 | 152,50 | 187,60  | 160,60 | 196,50  | 160,60 | 196,50  |
| 16   | 96,30  | 124,00 | 97,70  | 127,05 | 97,80  | 127,15 | 149,70 | 172,50 | 157,60 | 181,60 | 157,50 | 181,50 | 171,60 | 206,90  | 180,90 | 216,55  | 181,75 | 216,40  |
| 18   | 115,60 | 148,20 | 115,80 | 148,60 | 115,85 | 149,35 | 183,95 | 211,55 | 192,80 | 222,85 | 193,10 | 222,90 | 219,30 | 264,20  | 229,60 | 277,30  | 229,60 | 277,00  |
| 20   | 136,30 | 176,25 | 140,60 | 179,90 | 140,60 | 179,90 | 221,20 | 253,60 | 230,55 | 266,30 | 230,10 | 266,10 | 258,50 | 310,80  | 270,70 | 325,00  | 270,50 | 325,05  |



# 513



| Ø   | L1 | L  | €     |
|-----|----|----|-------|
| 3   | 10 | 40 | 12,80 |
| 3,5 | 10 | 40 | 12,80 |
| 4   | 12 | 40 | 13,65 |
| 4,5 | 12 | 50 | 15,25 |
| 5   | 14 | 50 | 16,05 |
| 6   | 16 | 50 | 18,80 |
| 7   | 18 | 60 | 24,90 |
| 8   | 19 | 60 | 27,85 |

| Ø  | L1 | L   | €      |
|----|----|-----|--------|
| 9  | 20 | 60  | 31,35  |
| 10 | 22 | 70  | 39,60  |
| 11 | 22 | 70  | 47,45  |
| 12 | 26 | 75  | 56,10  |
| 14 | 28 | 75  | 86,85  |
| 16 | 32 | 90  | 118,85 |
| 18 | 32 | 90  | 140,90 |
| 20 | 34 | 100 | 168,70 |

# 515



# 518



# 521



# 525



# 527



## 515

## 518 - 521

## 525 - 527

| Ø   | 515 |     |        | 518 - 521 |     |        | 525 - 527 |     |        |
|-----|-----|-----|--------|-----------|-----|--------|-----------|-----|--------|
|     | L1  | L   | €      | L1        | L   | €      | L1        | L   | €      |
| 3   | 10  | 40  | 9,85   | 10        | 40  | 11,70  | 10        | 40  | 13,60  |
| 3,5 | 10  | 40  | 9,85   | 10        | 40  | 11,70  | 10        | 40  | 13,60  |
| 4   | 12  | 40  | 10,80  | 12        | 40  | 12,25  | 12        | 40  | 14,30  |
| 4,5 | 12  | 50  | 11,80  | 12        | 50  | 13,80  | 12        | 50  | 16,30  |
| 5   | 14  | 50  | 12,50  | 14        | 50  | 14,70  | 14        | 50  | 17,25  |
| 5,5 | 14  | 50  | 15,25  | 14        | 50  | 16,40  | 14        | 50  | 18,35  |
| 6   | 16  | 50  | 16,70  | 16        | 50  | 17,05  | 16        | 50  | 19,55  |
| 6,5 | 16  | 50  | 20,40  | 16        | 50  | 20,85  | 16        | 50  | 23,80  |
| 7   | 18  | 60  | 22,05  | 18        | 60  | 21,90  | 18        | 60  | 25,65  |
| 7,5 | 18  | 60  | 23,30  | 18        | 60  | 23,70  | 18        | 60  | 26,85  |
| 8   | 19  | 60  | 24,60  | 19        | 60  | 25,75  | 19        | 60  | 28,55  |
| 8,5 | 19  | 60  | 25,50  | 19        | 60  | 26,75  | 19        | 60  | 29,90  |
| 9   | 20  | 60  | 25,85  | 20        | 60  | 28,05  | 20        | 60  | 30,80  |
| 9,5 | 22  | 70  | 29,75  | 22        | 70  | 31,65  | 22        | 70  | 35,10  |
| 10  | 22  | 70  | 33,80  | 22        | 70  | 34,85  | 22        | 70  | 39,10  |
| 11  | 22  | 70  | 38,60  | 22        | 70  | 41,80  | 22        | 70  | 47,65  |
| 12  | 26  | 75  | 45,75  | 26        | 75  | 48,70  | 26        | 75  | 50,90  |
| 13  | 26  | 75  | 58,30  | 26        | 75  | 62,60  | 26        | 75  | 64,60  |
| 14  | 28  | 75  | 68,25  | 28        | 75  | 74,90  | 28        | 75  | 77,30  |
| 15  | 28  | 75  | 90,60  | 28        | 75  | 93,30  | 28        | 75  | 94,80  |
| 16  | 32  | 90  | 101,05 | 32        | 90  | 103,20 | 32        | 90  | 106,60 |
| 18  | 32  | 90  | 120,60 | 32        | 90  | 122,70 | 32        | 90  | 127,20 |
| 20  | 34  | 100 | 143,30 | 34        | 100 | 147,20 | 34        | 100 | 154,20 |

### 530



| Ø  | L1 | L   | €      |
|----|----|-----|--------|
| 6  | 16 | 50  | 24,80  |
| 8  | 20 | 60  | 37,05  |
| 10 | 22 | 70  | 45,85  |
| 12 | 26 | 75  | 65,30  |
| 14 | 28 | 75  | 90,70  |
| 16 | 32 | 90  | 126,80 |
| 18 | 32 | 90  | 152,20 |
| 20 | 34 | 100 | 183,30 |



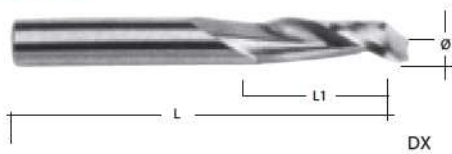
PAUSE PAUSE A FINITION B POUR EBAUCHE

### 532



## FRAISES A UNE TAILLE MONOBLOC EN METAL DUR

### 535



| Ø  | L1 | L  | €      |
|----|----|----|--------|
| 3  | 12 | 40 | 9,90   |
| 4  | 15 | 40 | 11,85  |
| 5  | 16 | 50 | 14,80  |
| 6  | 20 | 60 | 16,80  |
| 8  | 22 | 65 | 27,70  |
| 10 | 25 | 75 | 41,65  |
| 12 | 35 | 85 | 55,20  |
| 14 | 35 | 85 | 83,80  |
| 16 | 40 | 90 | 119,00 |

### 538



## FRAISES À PLUSIEURS COUPES EN METAL DUR

### 540



| 540 |    |     |    |        |
|-----|----|-----|----|--------|
| Ø   | L1 | L   | Z  | €      |
| 3   | 10 | 40  | 4  | 37,15  |
| 4   | 12 | 50  | 4  | 38,05  |
| 5   | 12 | 50  | 4  | 39,20  |
| 6   | 16 | 60  | 6  | 43,25  |
| 8   | 20 | 60  | 6  | 59,40  |
| 10  | 22 | 70  | 8  | 80,00  |
| 12  | 27 | 75  | 8  | 104,70 |
| 14  | 27 | 85  | 10 | 145,80 |
| 16  | 30 | 90  | 10 | 197,95 |
| 18  | 38 | 100 | 10 | 233,00 |
| 20  | 38 | 100 | 10 | 282,00 |

| 540/L |    |     |    |        |
|-------|----|-----|----|--------|
| Ø     | L1 | L   | Z  | €      |
| 3     | 30 | 60  | 4  | 39,75  |
| 4     | 30 | 60  | 4  | 40,90  |
| 5     | 35 | 70  | 4  | 44,00  |
| 6     | 40 | 100 | 6  | 47,50  |
| 8     | 40 | 100 | 6  | 67,10  |
| 10    | 45 | 100 | 8  | 88,00  |
| 12    | 45 | 100 | 8  | 126,00 |
| 14    | 45 | 100 | 10 | 182,00 |
| 16    | 45 | 100 | 10 | 247,50 |
| 18    | 50 | 125 | 10 | 314,00 |
| 20    | 75 | 150 | 10 | 380,00 |

### 540/L





## ALÉSOIRS EN CARBURE MONOBLOC

### 550

ELICA SX  
BORD DROIT - SERIE COURTE

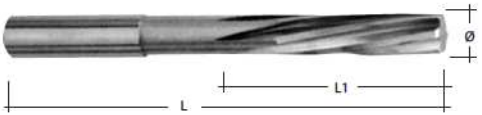


| Ø   | L1 | L  | Z | €     |
|-----|----|----|---|-------|
| 2   | 12 | 40 | 4 | 13,80 |
| 2,5 | 12 | 40 | 4 | 14,90 |
| 3   | 12 | 50 | 4 | 15,85 |
| 3,5 | 15 | 50 | 4 | 17,00 |
| 4   | 15 | 55 | 4 | 18,40 |
| 4,5 | 15 | 60 | 4 | 19,65 |
| 5   | 20 | 60 | 4 | 21,15 |
| 5,5 | 20 | 60 | 4 | 23,00 |

| Ø  | L1 | L   | Z | €     |
|----|----|-----|---|-------|
| 6  | 20 | 66  | 4 | 24,70 |
| 7  | 20 | 75  | 6 | 29,15 |
| 8  | 30 | 80  | 6 | 33,85 |
| 9  | 35 | 100 | 6 | 40,70 |
| 10 | 35 | 100 | 6 | 45,90 |
| 11 | 35 | 100 | 6 | 50,95 |
| 12 | 35 | 100 | 6 | 57,35 |

### 550/L

ELICA SX  
BORD DROIT - SERIE LONGUE

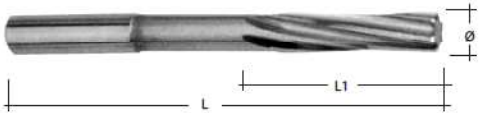


| Ø   | L1 | L   | Z | €     |
|-----|----|-----|---|-------|
| 2   | 12 | 50  | 4 | 17,75 |
| 2,5 | 14 | 57  | 4 | 19,05 |
| 3   | 20 | 60  | 4 | 20,35 |
| 3,5 | 22 | 70  | 4 | 23,30 |
| 4   | 22 | 75  | 4 | 25,05 |
| 4,5 | 22 | 75  | 4 | 27,30 |
| 5   | 28 | 86  | 4 | 30,80 |
| 5,5 | 28 | 93  | 4 | 32,50 |
| 6   | 30 | 100 | 4 | 39,00 |
| 7   | 30 | 110 | 6 | 48,90 |

| Ø  | L1 | L   | Z | €      |
|----|----|-----|---|--------|
| 8  | 33 | 117 | 6 | 56,30  |
| 9  | 36 | 125 | 6 | 65,70  |
| 10 | 38 | 133 | 6 | 75,80  |
| 11 | 40 | 142 | 6 | 85,75  |
| 12 | 44 | 150 | 6 | 98,80  |
| 13 | 44 | 150 | 6 | 119,75 |
| 14 | 47 | 160 | 6 | 135,50 |
| 15 | 50 | 162 | 6 | 156,80 |
| 16 | 52 | 170 | 6 | 183,20 |

### 553 - 553/L

ELICA DX  
BORD DROIT



#### SERIE COURTE

#### 553

| Ø   | L1 | L   | Z | €     |
|-----|----|-----|---|-------|
| 2   | 12 | 40  | 4 | 13,80 |
| 2,5 | 12 | 40  | 4 | 14,90 |
| 3   | 12 | 50  | 4 | 15,80 |
| 3,5 | 15 | 50  | 4 | 16,95 |
| 4   | 15 | 55  | 4 | 18,35 |
| 4,5 | 15 | 60  | 4 | 19,70 |
| 5   | 20 | 60  | 4 | 21,15 |
| 5,5 | 20 | 60  | 4 | 22,90 |
| 6   | 20 | 66  | 4 | 24,20 |
| 7   | 20 | 75  | 6 | 29,05 |
| 8   | 30 | 80  | 6 | 33,70 |
| 9   | 35 | 100 | 6 | 40,65 |
| 10  | 35 | 100 | 6 | 45,70 |
| 11  | 35 | 100 | 6 | 50,55 |
| 12  | 35 | 100 | 6 | 58,00 |

#### SERIE LONGUE

#### 553/L

| Ø   | L1 | L   | Z | €      |
|-----|----|-----|---|--------|
| 2   | 12 | 50  | 4 | 17,80  |
| 2,5 | 14 | 57  | 4 | 19,05  |
| 3   | 20 | 60  | 4 | 20,40  |
| 3,5 | 22 | 70  | 4 | 23,15  |
| 4   | 22 | 75  | 4 | 25,05  |
| 4,5 | 22 | 75  | 4 | 27,20  |
| 5   | 28 | 86  | 4 | 30,80  |
| 5,5 | 28 | 93  | 4 | 32,50  |
| 6   | 30 | 100 | 4 | 39,00  |
| 7   | 30 | 110 | 6 | 48,65  |
| 8   | 33 | 117 | 6 | 56,10  |
| 9   | 36 | 125 | 6 | 65,55  |
| 10  | 38 | 133 | 6 | 75,65  |
| 11  | 40 | 142 | 6 | 85,90  |
| 12  | 44 | 150 | 6 | 98,55  |
| 13  | 44 | 150 | 6 | 119,65 |
| 14  | 47 | 160 | 6 | 135,60 |
| 15  | 50 | 162 | 6 | 157,50 |
| 16  | 52 | 170 | 6 | 184,00 |

# 557

COUPE DROITE



| Ø   | L1 | L  | Z | €     |
|-----|----|----|---|-------|
| 2   | 12 | 40 | 4 | 13,80 |
| 2,5 | 12 | 40 | 4 | 14,85 |
| 3   | 12 | 50 | 4 | 15,90 |
| 3,5 | 15 | 50 | 4 | 17,05 |
| 4   | 15 | 55 | 4 | 18,40 |
| 4,5 | 15 | 60 | 4 | 19,70 |
| 5   | 20 | 60 | 4 | 21,05 |
| 5,5 | 20 | 60 | 4 | 22,80 |

| Ø  | L1 | L   | Z | €     |
|----|----|-----|---|-------|
| 6  | 20 | 66  | 4 | 24,15 |
| 7  | 20 | 75  | 6 | 28,90 |
| 8  | 30 | 80  | 6 | 33,75 |
| 9  | 35 | 100 | 6 | 40,80 |
| 10 | 35 | 100 | 6 | 45,75 |
| 11 | 35 | 100 | 6 | 50,85 |
| 12 | 35 | 100 | 6 | 57,65 |

## FORET ALÉSEUR EN CARBURE MONOBLOC

# 560

ELICA DX BORD DROIT



| Ø   | L1 | L  | Z | €     |
|-----|----|----|---|-------|
| 2   | 12 | 40 | 4 | 17,80 |
| 2,5 | 12 | 40 | 4 | 19,05 |
| 3   | 12 | 50 | 4 | 20,35 |
| 3,5 | 15 | 50 | 4 | 22,00 |
| 4   | 15 | 55 | 4 | 23,60 |
| 4,5 | 15 | 60 | 4 | 25,45 |
| 5   | 20 | 60 | 4 | 27,35 |
| 5,5 | 20 | 60 | 4 | 29,25 |

| Ø  | L1 | L   | Z | €     |
|----|----|-----|---|-------|
| 6  | 20 | 66  | 4 | 31,70 |
| 7  | 20 | 75  | 6 | 34,15 |
| 8  | 30 | 80  | 6 | 40,05 |
| 9  | 35 | 100 | 6 | 48,10 |
| 10 | 35 | 100 | 6 | 54,05 |
| 11 | 35 | 100 | 6 | 59,65 |
| 12 | 35 | 100 | 6 | 66,70 |

OUTIL POUR REDRESSER

## FORETS HÉLICOIDaux EN CARBURE MONOBLOC

# 570

SERIE COURTE



| Ø   | L1 | L  | €     |
|-----|----|----|-------|
| 4   | 20 | 50 | 12,45 |
| 4,5 | 25 | 50 | 13,70 |
| 5   | 25 | 50 | 15,15 |
| 5,5 | 25 | 50 | 17,35 |
| 6   | 25 | 50 | 18,90 |
| 6,5 | 28 | 60 | 20,30 |
| 7   | 28 | 60 | 23,40 |
| 7,5 | 28 | 60 | 27,35 |
| 8   | 28 | 60 | 29,75 |
| 8,5 | 28 | 60 | 31,80 |
| 9   | 28 | 60 | 35,15 |
| 9,5 | 30 | 70 | 38,05 |
| 10  | 30 | 70 | 41,25 |

| Ø    | L1 | L  | €      |
|------|----|----|--------|
| 10,5 | 30 | 70 | 43,60  |
| 11   | 30 | 70 | 46,25  |
| 11,5 | 30 | 70 | 51,15  |
| 12   | 32 | 75 | 57,30  |
| 12,5 | 32 | 75 | 64,30  |
| 13   | 32 | 75 | 71,90  |
| 13,5 | 32 | 75 | 81,85  |
| 14   | 32 | 75 | 90,50  |
| 14,5 | 32 | 75 | 93,90  |
| 15   | 32 | 75 | 105,85 |
| 15,5 | 36 | 90 | 119,85 |
| 16   | 36 | 90 | 130,80 |



### 573 DIN 1897



| Ø    | L1 | L  | €     |
|------|----|----|-------|
| 2    | 12 | 40 | 6,45  |
| 2,5  | 14 | 43 | 7,50  |
| 3    | 16 | 46 | 8,10  |
| 3,5  | 20 | 52 | 10,75 |
| 4    | 22 | 55 | 12,60 |
| 4,5  | 24 | 58 | 15,05 |
| 5    | 26 | 62 | 16,80 |
| 5,5  | 28 | 66 | 19,65 |
| 6    | 28 | 66 | 21,65 |
| 6,5  | 30 | 70 | 24,30 |
| 7    | 34 | 74 | 26,10 |
| 7,5  | 34 | 74 | 29,60 |
| 8    | 37 | 80 | 31,00 |
| 8,5  | 37 | 80 | 35,10 |
| 9    | 40 | 84 | 38,00 |
| 9,5  | 40 | 84 | 41,05 |
| 10   | 43 | 90 | 46,00 |
| 10,5 | 43 | 90 | 50,00 |
| 11   | 47 | 95 | 55,00 |

| Ø    | L1 | L   | €      |
|------|----|-----|--------|
| 11,5 | 47 | 95  | 61,00  |
| 12   | 50 | 102 | 67,50  |
| 12,5 | -  | -   | 76,00  |
| 13   | 50 | 102 | 84,00  |
| 13,5 | -  | -   | 95,50  |
| 14   | 54 | 107 | 104,00 |
| 14,5 | -  | -   | 113,50 |
| 15   | 56 | 110 | 119,05 |
| 15,5 | -  | -   | 129,20 |
| 16   | 58 | 115 | 135,30 |
| 16,5 | -  | -   | 156,00 |
| 17   | 60 | 120 | 175,00 |
| 17,5 | -  | -   | 184,00 |
| 18   | 62 | 123 | 195,50 |
| 18,5 | -  | -   | 226,00 |
| 19   | 64 | 127 | 233,00 |
| 19,5 | -  | -   | 247,00 |
| 20   | 66 | 130 | 262,00 |

### 575 DIN 338



| Ø   | L1 | L   | €     |
|-----|----|-----|-------|
| 2   | 24 | 50  | 7,65  |
| 2,5 | 30 | 57  | 8,90  |
| 3   | 33 | 60  | 10,20 |
| 3,5 | 40 | 70  | 12,60 |
| 4   | 43 | 75  | 14,90 |
| 4,5 | 47 | 80  | 17,55 |
| 5   | 52 | 86  | 20,60 |
| 5,5 | 57 | 93  | 25,20 |
| 6   | 57 | 93  | 27,60 |
| 6,5 | 63 | 100 | 33,05 |
| 7   | 70 | 110 | 38,60 |
| 7,5 | 70 | 110 | 41,00 |
| 8   | 75 | 117 | 45,15 |
| 8,5 | 75 | 117 | 52,00 |
| 9   | 80 | 125 | 61,95 |

| Ø    | L1  | L   | €      |
|------|-----|-----|--------|
| 9,5  | 80  | 125 | 67,20  |
| 10   | 87  | 133 | 74,00  |
| 10,5 | 87  | 133 | 82,25  |
| 11   | 94  | 142 | 95,30  |
| 11,5 | 94  | 142 | 107,05 |
| 12   | 100 | 150 | 122,00 |
| 12,5 | -   | -   | 134,00 |
| 13   | 100 | 150 | 149,00 |
| 13,5 | -   | -   | 166,30 |
| 14   | 108 | 155 | 176,00 |
| 14,5 | -   | -   | 190,00 |
| 15   | 114 | 170 | 194,05 |
| 15,5 | -   | -   | 202,00 |
| 16   | 120 | 178 | 210,50 |

### 580 POUR FONTE



#### 580/583

| Ø    | L1 | L  | €     |
|------|----|----|-------|
| 2    | 12 | 40 | 6,50  |
| 2,5  | 14 | 53 | 7,55  |
| 3    | 16 | 46 | 8,25  |
| 3,5  | 20 | 52 | 10,80 |
| 4    | 22 | 55 | 12,75 |
| 4,5  | 24 | 58 | 15,15 |
| 5    | 26 | 62 | 16,90 |
| 5,5  | 28 | 66 | 19,70 |
| 6    | 28 | 66 | 21,75 |
| 6,5  | 30 | 70 | 24,45 |
| 7    | 34 | 74 | 26,20 |
| 7,5  | 34 | 74 | 29,65 |
| 8    | 37 | 80 | 31,05 |
| 8,5  | 37 | 80 | 35,30 |
| 9    | 40 | 84 | 38,50 |
| 9,5  | 40 | 84 | 41,45 |
| 10   | 43 | 90 | 46,00 |
| 10,5 | 43 | 90 | 50,20 |
| 11   | 47 | 95 | 55,00 |

#### 580/583

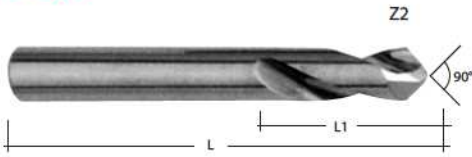
| Ø    | L1 | L   | €      |
|------|----|-----|--------|
| 11,5 | 47 | 95  | 60,80  |
| 12   | 50 | 102 | 67,90  |
| 12,5 | -  | -   | 75,85  |
| 13   | 50 | 102 | 83,05  |
| 13,5 | -  | -   | 94,90  |
| 14   | 54 | 107 | 103,20 |
| 14,5 | -  | -   | 112,90 |
| 15   | 56 | 110 | 119,85 |
| 15,5 | -  | -   | 129,70 |
| 16   | 58 | 115 | 135,85 |
| 16,5 | -  | -   | 155,80 |
| 17   | 60 | 120 | 174,10 |
| 17,5 | -  | -   | 183,75 |
| 18   | 62 | 123 | 194,35 |
| 18,5 | -  | -   | 226,50 |
| 19   | 64 | 127 | 232,60 |
| 19,5 | -  | -   | 247,00 |
| 20   | 66 | 130 | 262,00 |

### 583 POUR ALLUMINIUM



FORETS À CENTRER EN CARBURE MONOBLOC

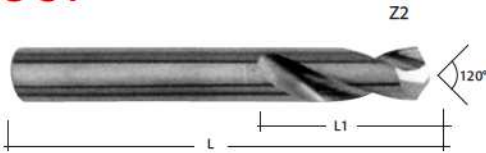
585



| Ø | L1 | L  | €     |
|---|----|----|-------|
| 3 | 10 | 40 | 7,80  |
| 4 | 12 | 40 | 9,05  |
| 5 | 15 | 50 | 10,50 |
| 6 | 20 | 50 | 11,20 |
| 8 | 22 | 60 | 18,00 |

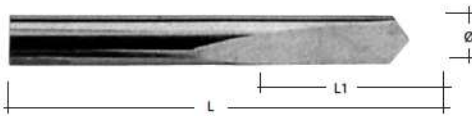
| Ø  | L1 | L   | €      |
|----|----|-----|--------|
| 10 | 23 | 70  | 24,80  |
| 12 | 25 | 80  | 36,60  |
| 14 | 25 | 80  | 58,50  |
| 16 | 28 | 90  | 65,20  |
| 20 | 30 | 100 | 122,00 |

587



FORETS DE POINTE EN CARBURE MONOBLOC

590

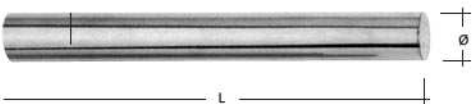


| Ø   | L1 | L  | €     |
|-----|----|----|-------|
| 2   | 16 | 40 | 7,80  |
| 2,5 | 16 | 40 | 8,05  |
| 3   | 18 | 40 | 8,30  |
| 3,5 | 18 | 40 | 8,80  |
| 4   | 20 | 40 | 9,70  |
| 5   | 25 | 50 | 11,90 |

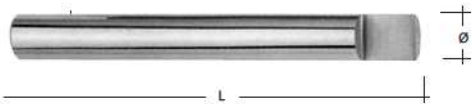
| Ø  | L1 | L  | €     |
|----|----|----|-------|
| 6  | 25 | 50 | 14,15 |
| 7  | 30 | 60 | 18,85 |
| 8  | 30 | 60 | 22,80 |
| 9  | 30 | 60 | 27,00 |
| 10 | 32 | 70 | 33,50 |
| 12 | 38 | 75 | 45,30 |

BARREAUX RONDES ET BURINS À GRAVER EN CARBURE MONOBLOC

593



595



| Ø   | L   | 593 595 |       |
|-----|-----|---------|-------|
|     |     | €       | €     |
| 2   | 100 | 4,85    | 5,75  |
| 2,5 | 100 | 5,30    | 6,40  |
| 3   | 100 | 6,50    | 7,70  |
| 4   | 100 | 7,50    | 8,80  |
| 5   | 100 | 10,40   | 12,35 |
| 6   | 100 | 12,35   | 14,70 |
| 7   | 100 | 17,30   | 20,30 |
| 8   | 100 | 18,90   | 22,45 |

| Ø  | L   | 593 595 |        |
|----|-----|---------|--------|
|    |     | €       | €      |
| 9  | 100 | 24,10   | 28,90  |
| 10 | 100 | 28,20   | 33,70  |
| 11 | 100 | 34,50   | 41,40  |
| 12 | 100 | 37,50   | 43,25  |
| 14 | 100 | 52,55   | 68,45  |
| 16 | 100 | 68,10   | 80,80  |
| 18 | 100 | 84,05   | 109,00 |
| 20 | 100 | 103,00  | 135,00 |



CERTAINS OUTILS SPECIAUX  
DE NOTRE PRODUCTION

**GROUPE  
RUSTONI**

**SNDPI**





Outils à un seul taillant





601



OUTIL DROIT POUR ÉBAUCHER - ISO 1 - DIN 4971 - UNI 4102

| STELO      | L   | €    |
|------------|-----|------|
| 8 x 8 RL   | 80  | 3,60 |
| 10 x 10 RL | 90  | 3,60 |
| 12 x 12 RL | 100 | 3,85 |
| 16 x 16 RL | 110 | 5,00 |

| STELO      | L   | €     |
|------------|-----|-------|
| 20 x 20 RL | 125 | 6,00  |
| 25 x 25 RL | 140 | 9,80  |
| 32 x 32 RL | 170 | 15,00 |
| 40 x 40 RL | 200 | 27,25 |

-  P 20/30 - ACIERS
-  K 10/20 - DURS ET ABRASIFS
-  M 30 - UNIVERSELS

606



OUTIL COUDÉ POUR EBAUCHER - ISO 2 - DIN 4972 - UNI 4103

| STELO      | L   | €    |
|------------|-----|------|
| 8 x 8 RL   | 80  | 3,60 |
| 10 x 10 RL | 90  | 3,60 |
| 12 x 12 RL | 100 | 3,85 |
| 16 x 16 RL | 110 | 5,00 |

| STELO      | L   | €     |
|------------|-----|-------|
| 20 x 20 RL | 125 | 6,00  |
| 25 x 25 RL | 140 | 9,80  |
| 32 x 32 RL | 170 | 15,00 |
| 40 x 40 RL | 200 | 27,25 |

-  P 20/30 - ACIERS
-  K 10/20 - DURS ET ABRASIFS
-  M 30 - UNIVERSELS

611



OUTIL À PLANER - ISO 4 - DIN 4976- UNI 4107

| STELO   | L   | €    |
|---------|-----|------|
| 8 x 8   | 80  | 3,95 |
| 10 x 10 | 90  | 4,20 |
| 12 x 12 | 100 | 5,30 |
| 16 x 16 | 110 | 6,80 |

| STELO   | L   | €     |
|---------|-----|-------|
| 20 x 20 | 125 | 9,00  |
| 25 x 25 | 140 | 14,25 |
| 32 x 32 | 170 | 24,40 |
| 40 x 40 | 200 | 40,65 |

-  P 20/30 - ACIERS
-  K 10/20 - DURS ET ABRASIFS
-  M 30 - UNIVERSELS

616



OUTIL COUDÉ À SURFACER - ISO 6 - DIN 4980 - UNI 4104

| STELO      | L   | €    |
|------------|-----|------|
| 8 x 8 RL   | 80  | 3,60 |
| 10 x 10 RL | 90  | 3,60 |
| 12 x 12 RL | 100 | 3,85 |
| 16 x 16 RL | 110 | 5,00 |

| STELO      | L   | €     |
|------------|-----|-------|
| 20 x 20 RL | 125 | 6,00  |
| 25 x 25 RL | 140 | 9,80  |
| 32 x 32 RL | 170 | 15,00 |
| 40 x 40 RL | 200 | 27,25 |

-  P 20/30 - ACIERS
-  K 10/20 - DURS ET ABRASIFS
-  M 30 - UNIVERSELS

621



OUTIL À TRONCONNER - ISO 7 - DIN 4981- UNI 4109

| STELO      | L   | €    |
|------------|-----|------|
| 10 x 6 RL  | 90  | 4,55 |
| 12 x 8 RL  | 100 | 4,55 |
| 16 x 10 RL | 110 | 5,30 |
| 20 x 12 RL | 125 | 6,00 |

| STELO      | L   | €     |
|------------|-----|-------|
| 25 x 16 RL | 140 | 8,40  |
| 32 x 20 RL | 170 | 12,00 |
| 40 x 25 RL | 200 | 18,85 |
| 50 x 32 RL | 240 | 25,55 |

-  P 20/30 - ACIERS
-  K 10/20 - DURS ET ABRASIFS
-  M 30 - UNIVERSELS

626



OUTIL COUDÉ POUR TROUS DE PASSAGE - ISO 8 - DIN 4973- UNI 4110

| STELO     | L   | €    |
|-----------|-----|------|
| 8 x 8 R   | 125 | 4,20 |
| 10 x 10 R | 150 | 4,50 |
| 12 x 12 R | 180 | 5,30 |
| 16 x 16 R | 210 | 6,15 |

| STELO     | L   | €     |
|-----------|-----|-------|
| 20 x 20 R | 250 | 8,00  |
| 25 x 25 R | 300 | 11,80 |
| 32 x 32 R | 355 | 18,40 |
| 40 x 40 R | 400 | 28,70 |

-  P 20/30 - ACIERS
-  K 10/20 - DURS ET ABRASIFS
-  M 30 - UNIVERSELS

631



OUTIL COUDÉ POUR TROUS AVEUGLES - ISO 9 - DIN 4974 - UNI 4111

| STELO     | L   | €    |
|-----------|-----|------|
| 8 x 8 R   | 125 | 4,20 |
| 10 x 10 R | 150 | 4,50 |
| 12 x 12 R | 180 | 5,30 |
| 16 x 16 R | 210 | 6,15 |

| STELO     | L   | €     |
|-----------|-----|-------|
| 20 x 20 R | 250 | 8,00  |
| 25 x 25 R | 300 | 11,80 |
| 32 x 32 R | 355 | 18,40 |
| 40 x 40 R | 400 | 28,70 |

-  P 20/30 - ACIERS
-  K 10/20 - DURS ET ABRASIFS
-  M 30 - UNIVERSELS

636



OUTIL À CROCHET POUR INTERIEUR - DIN 263

| STELO     | L   | b1 | €    |
|-----------|-----|----|------|
| 8 x 8 R   | 125 | 3  | 6,45 |
| 10 x 10 R | 150 | 3  | 6,00 |
| 12 x 12 R | 180 | 4  | 6,75 |
| 16 x 16 R | 210 | 5  | 9,00 |

| STELO     | L   | b1 | €     |
|-----------|-----|----|-------|
| 20 x 20 R | 250 | 6  | 11,00 |
| 25 x 25 R | 300 | 8  | 14,35 |
| 32 x 32 R | 300 | 8  | 21,50 |
| 40 x 40 R | 350 | 8  | 29,60 |

-  P 20/30 - ACIERS
-  K 10/20 - DURS ET ABRASIFS
-  M 30 - UNIVERSELS

641



OUTIL POUR FILETAGE INTERIEUR A 60° - DIN 283

| STELO     | L   | €    |
|-----------|-----|------|
| 8 x 8 R   | 125 | 7,15 |
| 10 x 10 R | 140 | 6,45 |
| 12 x 12 R | 160 | 7,15 |
| 16 x 16 R | 180 | 9,00 |

| STELO     | L   | €     |
|-----------|-----|-------|
| 20 x 20 R | 210 | 11,00 |
| 25 x 25 R | 250 | 15,00 |
| 32 x 32 R | 300 | 21,50 |

-  P 20/30 - ACIERS
-  K 10/20 - DURS ET ABRASIFS
-  M 30 - UNIVERSELS

643



OUTIL POUR FILETAGE EXTERIEUR A 60° - DIN 282

| STELO   | L   | €     |
|---------|-----|-------|
| 16 x 10 | 125 | 4,50  |
| 20 x 12 | 140 | 6,00  |
| 25 x 16 | 160 | 7,90  |
| 32 x 20 | 180 | 12,10 |

| STELO   | L   | €    |
|---------|-----|------|
| 10 x 10 | 100 | 4,50 |
| 12 x 12 | 110 | 4,50 |
| 16 x 16 | 125 | 4,55 |
| 20 x 20 | 140 | 6,45 |

-  P 20/30 - ACIERS
-  K 10/20 - DURS ET ABRASIFS
-  M 30 - UNIVERSELS

| STELO   | L   | €     |
|---------|-----|-------|
| 25 x 25 | 160 | 9,00  |
| 32 x 32 | 180 | 13,60 |





646



OUTIL POUR GORGES TRAPÉZOIDALES À 34°

| STELO   | L   | €     |
|---------|-----|-------|
| 20 x 12 | 125 | 7,60  |
| 25 x 16 | 140 | 10,20 |
| 32 x 20 | 170 | 15,00 |
| 40 x 25 | 200 | 24,00 |
| 50 x 32 | 240 | 35,50 |

 P 20/30 - ACIERS

 K 10/20 - DURS ET ABRASIFS

 M 30 - UNIVERSELS

SUR DEMANDE 36° - 38°

651




OUTIL POUR TOUR AUTOMATIQUE POUR PASSE

| STELO      | L   | €    |
|------------|-----|------|
| 6 x 6 RL   | 130 | 6,30 |
| 7 x 7 RL   | 140 | 6,30 |
| 8 x 8 RL   | 140 | 6,30 |
| 10 x 10 RL | 150 | 6,75 |

| STELO      | L   | €     |
|------------|-----|-------|
| 12 x 12 RL | 160 | 7,20  |
| 14 x 14 RL | 160 | 8,30  |
| 16 x 16 RL | 160 | 10,20 |
| 20 x 20 RL | 160 | 14,20 |

 P 20/30 - ACIERS

 K 10/20 - DURS ET ABRASIFS

 M 30 - UNIVERSELS


656





OUTIL POUR TOUR AUTOMATIQUE A COUPER

| STELO      | L   | €    |
|------------|-----|------|
| 6 x 6 RL   | 130 | 6,75 |
| 7 x 7 RL   | 140 | 6,75 |
| 8 x 8 RL   | 140 | 6,75 |
| 10 x 10 RL | 150 | 7,20 |

| STELO      | L   | €     |
|------------|-----|-------|
| 12 x 12 RL | 160 | 7,80  |
| 14 x 14 RL | 160 | 9,75  |
| 16 x 16 RL | 160 | 11,25 |
| 20 x 20 RL | 160 | 15,95 |

 P 20/30 - ACIERS

 K 10/20 - DURS ET ABRASIFS

 M 30 - UNIVERSELS


661




OUTIL POUR TOUR AUTOMATIQUE EN PIQUE

| STELO   | L   | €     |
|---------|-----|-------|
| 8 x 8   | 130 | 8,90  |
| 10 x 10 | 150 | 9,80  |
| 12 x 12 | 160 | 11,25 |

| STELO   | L   | €     |
|---------|-----|-------|
| 14 x 14 | 160 | 13,55 |
| 16 x 16 | 160 | 15,85 |
| 20 x 20 | 160 | 18,90 |

 P 20/30 - ACIERS

 K 10/20 - DURS ET ABRASIFS

 M 30 - UNIVERSELS

666



OUTILS RONDS POUR INTERIEURS - TROUS AVEUGLES 30°

| STELO      | €    |
|------------|------|
| Ø 8 x 30   | 4,55 |
| Ø 10 x 45  | 5,20 |
| Ø 12 x 55  | 6,00 |
| Ø 16 x 70  | 7,55 |
| Ø 22 x 100 | 9,30 |

-  P 20/30 - ACIERS
-  K 10/20 - DURS ET ABRASIFS
-  M 30 - UNIVERSELS

671



OUTILS RONDS POUR INTERIEURS - TROUS PASSANTS 60°

| STELO      | €    |
|------------|------|
| Ø 8 x 30   | 4,55 |
| Ø 10 x 45  | 5,20 |
| Ø 12 x 55  | 6,00 |
| Ø 16 x 70  | 7,55 |
| Ø 22 x 100 | 9,30 |

-  P 20/30 - ACIERS
-  K 10/20 - DURS ET ABRASIFS
-  M 30 - UNIVERSELS

676



OUTILS RONDS POUR INTERIEURS - TROUS AVEC FEUILLURE 90°

| STELO      | €    |
|------------|------|
| Ø 8 x 30   | 4,55 |
| Ø 10 x 45  | 5,20 |
| Ø 12 x 55  | 6,00 |
| Ø 16 x 70  | 7,55 |
| Ø 22 x 100 | 9,30 |

-  P 20/30 - ACIERS
-  K 10/20 - DURS ET ABRASIFS
-  M 30 - UNIVERSELS

681



OUTILS RONDS POUR INTERIEURS - FINISSEURS 80°

| STELO      | €    |
|------------|------|
| Ø 8 x 30   | 4,55 |
| Ø 10 x 45  | 5,20 |
| Ø 12 x 55  | 6,00 |
| Ø 16 x 70  | 7,55 |
| Ø 22 x 100 | 9,30 |










-  P 20/30 - ACIERS
-  K 10/20 - DURS ET ABRASIFS
-  M 30 - UNIVERSELS



FORETS - VITESSE DE TAILLE ET AVANCEMENT POUR PERCEMENT DE DIFFERENTS MATERIELS  
AVEC FORETS EN CARBURE MONOBLOC OU AVEC LAMES RAPPORTEES

| Materiel<br>$\sigma B$ resp. HB in kp/mm <sup>2</sup>             | Vitesse de taille<br>V = m/min | Avancements/Revolution |              |              |              |              |              |              | Réfrigérant      |
|---|--------------------------------|------------------------|--------------|--------------|--------------|--------------|--------------|--------------|------------------|
|   |                                | Foret d mm             |              |              |              |              |              |              |                  |
|   |                                | 1                      | 2            | 5            | 8            | 12           | 16           | 25           |                  |
| Acier de construction<br>$\sigma B > 70$                          | 40 - 60                        | 0,01                   | 0,02         | 0,04         | 0,06         | 0,08         | 0,12         | 0,15         | Emulsion         |
| Acier d'outillage<br>$\sigma B 100...140$<br>$\sigma B 160...180$ | 25 - 35<br>20 - 25             | 0,01<br>0,01           | 0,01<br>0,01 | 0,02<br>0,02 | 0,03<br>0,02 | 0,05<br>0,03 | 0,06<br>0,04 | 0,08<br>0,05 | Emulsion         |
| Acier INOX (V2A)  | 20 - 30                        | 0,01                   | 0,02         | 0,03         | 0,05         | 0,08         | 0,10         | 0,12         | Emulsion         |
| Fonte<br>BB 160...200<br>HB > 200                                 | 60 - 80<br>25 - 40             | 0,03<br>0,01           | 0,04<br>0,02 | 0,08<br>0,04 | 0,10<br>0,06 | 0,12<br>0,06 | 0,16<br>0,08 | 0,20<br>0,12 | Sec              |
| Acier fondu<br>$\sigma B < 50$<br>$\sigma B < 70$                 | 40 - 60<br>25 - 40             | 0,03<br>0,01           | 0,04<br>0,02 | 0,06<br>0,04 | 0,08<br>0,06 | 0,10<br>0,08 | 0,12<br>0,10 | 0,18<br>0,12 | Emulsion         |
| Cuivre  | 80 - 100                       | 0,02                   | 0,04         | 0,06         | 0,08         | 0,12         | 0,16         | 0,22         | Sec              |
| Bronze, Zinc, Laiton<br>HB < 80                                   | 80 - 120                       | 0,05                   | 0,06         | 0,08         | 0,10         | 0,16         | 0,20         | 0,25         | Sec              |
| Aluminium allie   | 150 - 250                      | 0,02                   | 0,08         | 0,16         | 0,20         | 0,28         | 0,36         |              | Emulsion         |
| Cartons   | 60 - 100                       | 0,01                   | 0,02         | 0,04         | 0,08         | 0,10         | 0,15         | 0,20         | Sec (aspiration) |
| Plastique   | 80 - 120                       | 0,02                   | 0,03         | 0,08         | 0,12         | 0,16         | 0,22         | 0,30         | Sec (aspiration) |
| Materiels thermoplastiques  | 80 - 150                       | 0,01                   | 0,02         | 0,04         | 0,06         | 0,10         | 0,12         | 0,18         | Sec              |

ALESOIRS - VITESSE DE TAILLE ET AVANCEMENT DANS L'ALESAGE DE DIFFERENTS MATERIELS AVEC ALESOIRES EN CARBURE MONOBLOC OU AVEC LAMES RAPPORTEES

| Materiel              | Vitesse de taille<br>V = m/min | Avancements S = mm/T Ø d = mm  |           |           |           | Réfrigérant       |
|-----------------------|--------------------------------|--|-----------|-----------|-----------|-------------------|
|                       |                                | 0  | 10        | 20        | 30        |                   |
| Acier de construction | 12 - 15                        |  | 0,15-0,25 | 0,20-0,35 | 0,30-0,50 | Emulsion          |
|                       | 10 - 12                        |  | 0,12-0,20 | 0,16-0,30 | 0,25-0,40 |                   |
|                       | 8 - 10                         |  | 0,10-0,20 | 0,15-0,25 | 0,25-0,35 |                   |
| Acier d'outillage     | 6 - 10                         |  | 0,10-0,20 | 0,15-0,25 | 0,20-0,35 | Emulsion          |
|                       | 6 - 8                          |  | 0,08-0,12 | 0,10-0,15 | 0,15-0,30 |                   |
| Acier Inox            | 10 - 15                        |  | 0,10      | 0,14      | 0,17      | Emulsion          |
| Fonte                 | 12 - 15                        |  | 0,30      | 0,50      | 0,70      | Emulsion - Petrol |
|                       | 10 - 12                        |  | 0,15      | 0,30      | 0,45      |                   |
| Acier fondu           | 10 - 15                        |  | 0,25      | 0,40      | 0,50      | Emulsion          |
|                       | 8 - 12                         |  | 0,12      | 0,15      | 0,20      |                   |
| Cuivre, Bronze        | 20 - 40                        |  | 0,15-0,25 | 0,20-0,35 | 0,30-0,50 | Sec               |
| Laiton                | 20 - 40                        |  | 0,10-0,20 | 0,15-0,25 | 0,20-0,30 | Sec               |
| Aluminium             | 25 - 40                        |  | 0,15-0,25 | 0,20-0,35 | 0,30-0,60 | Petrol            |
| Matières syntétiques  | 20 - 35                        |  | 0,15-0,30 | 0,25-0,40 | 0,30-0,60 | Sec               |

$$V_c = \frac{\pi \times D_c \times n}{1000}$$

V<sub>c</sub> = Vitesse de taille

n = Tour/M

V<sub>1</sub> = Avancement/M

D<sub>c</sub> = Diamètre fraise

S = Avancement/Tour

S<sub>z</sub> = Avancement de taille

$$n = \frac{V_c \times 1000}{D \times \pi}$$

$$S = \frac{V_1}{n}$$



FRAISES - VITESSE DE TAILLE ET AVANCEMENT DANS LE FRAISAGE DE DIFFERENTS MATERIELS  
AVEC OUTILS CARBURE MONOBLOC OU AVEC LAMES RAPPORTEES

| Materiel<br>$\sigma_B$ resp. HB in kp/mm <sup>2</sup>                             | Vitesse de taille<br>V = m/min    | Avancements          |                      |                      |                      |                      |                      | Réfrigérant        |
|---|-----------------------------------|----------------------|----------------------|----------------------|----------------------|----------------------|----------------------|--------------------|
|   |                                   | 2-4                  | 5-8                  | 9-12                 | 13-16                | 17-20                | 25                   |                    |
| Acier de construction<br>$\sigma_B < 50$<br>$\sigma_B 50...70$<br>$\sigma_B > 70$ | 60 - 120<br>50 - 90<br>40 - 60    | 0,04<br>0,03<br>0,02 | 0,05<br>0,04<br>0,03 | 0,06<br>0,05<br>0,04 | 0,07<br>0,06<br>0,05 | 0,08<br>0,07<br>0,06 | 0,10<br>0,09<br>0,08 | Emulsion           |
| Acier d'outillage<br>$\sigma_B 100...200$<br>$\sigma_B 160...180$                 | 40 - 80<br>30 - 50                | 0,01<br>0,01         | 0,02<br>0,02         | 0,03<br>0,03         | 0,04<br>0,04         | 0,05<br>0,05         | 0,07<br>0,07         | Emulsion           |
| Fonte<br>HB 160...200<br>HB > 200   | 60 - 90<br>50 - 80                | 0,035<br>0,02        | 0,06<br>0,04         | 0,08<br>0,06         | 0,09<br>0,08         | 0,12<br>0,11         | 0,15<br>0,14         | Emulsion (sec)     |
| Acier fondu<br>$\sigma_B < 50$<br>$\sigma_B < 50$                                 | 80 - 140<br>60 - 120              | 0,03<br>0,01         | 0,05<br>0,03         | 0,06<br>0,04         | 0,07<br>0,05         | 0,08<br>0,06         | 0,10<br>0,09         | Emulsion           |
| Bronze, Zinc, Laiton  | 100 - 250<br>90 - 200<br>80 - 160 | 0,02                 | 0,04                 | 0,06                 | 0,08                 | 0,10                 | 0,13                 | Sec emulsion huile |
| Aluminium   | 400 - 600                         | 0,03                 | 0,06                 | 0,10                 | 0,14                 | 0,18                 | 0,23                 | Emulsion           |
| Plastique   | 100 - 150                         | 0,02                 | 0,04                 | 0,06                 | 0,08                 | 0,10                 | 0,15                 | Sec (aspiration)   |
| Materiels thermoplastiques  | 120 - 180                         | 0,03                 | 0,06                 | 0,10                 | 0,16                 | 0,20                 | 0,25                 | Emulsion           |
| Titane  | 20 - 60                           | 0,01                 | 0,03                 | 0,04                 | 0,05                 | 0,06                 | 0,08                 | Emulsion           |



[www.groupeaustoni.com](http://www.groupeaustoni.com)



[www.sndpi.com](http://www.sndpi.com)

☎ 00 33 (05) 53 57 70 52 - 📠 00 33 (05) 53 57 12 90

ZA LES GALINOUX - 24100 CREYSSE

BERGERAC - FRANCE

Email : [sndpi@groupeaustoni.fr](mailto:sndpi@groupeaustoni.fr)